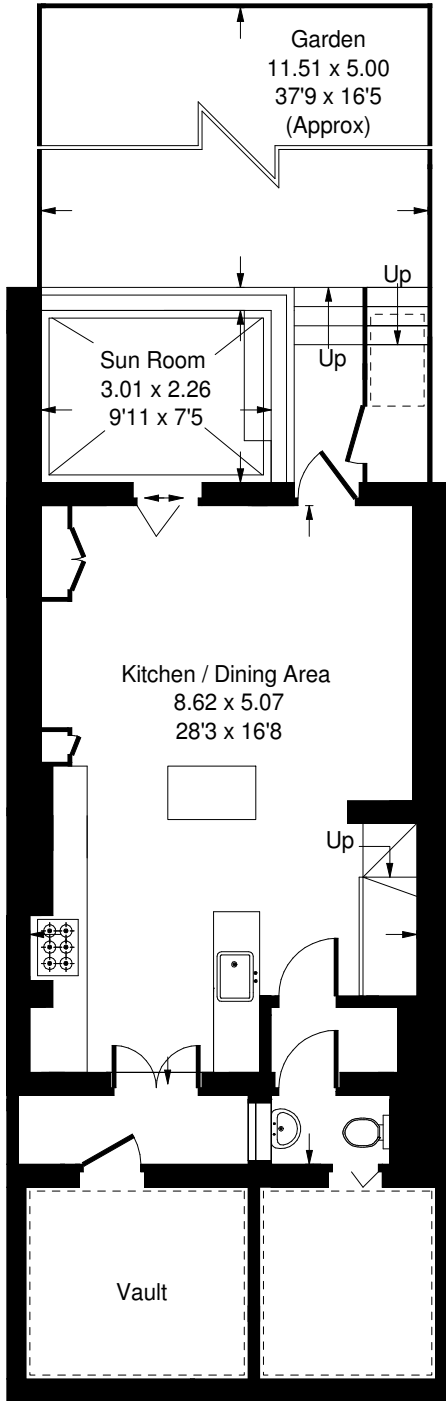
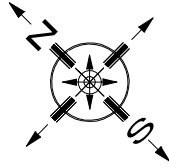
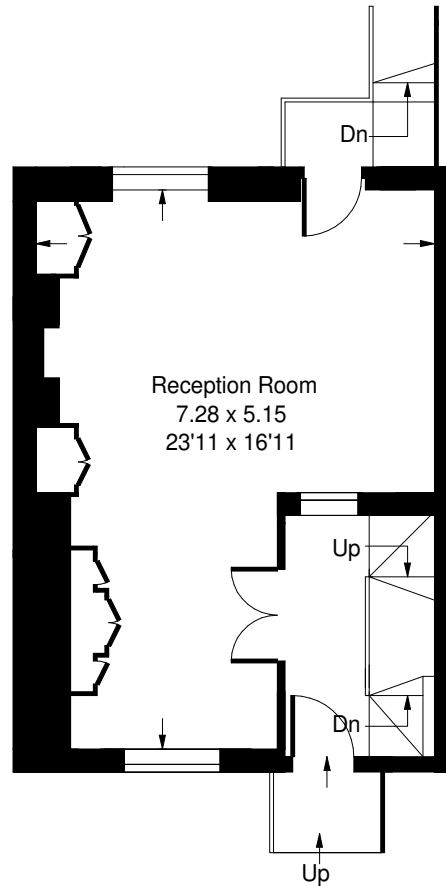


Seymour Walk, SW10

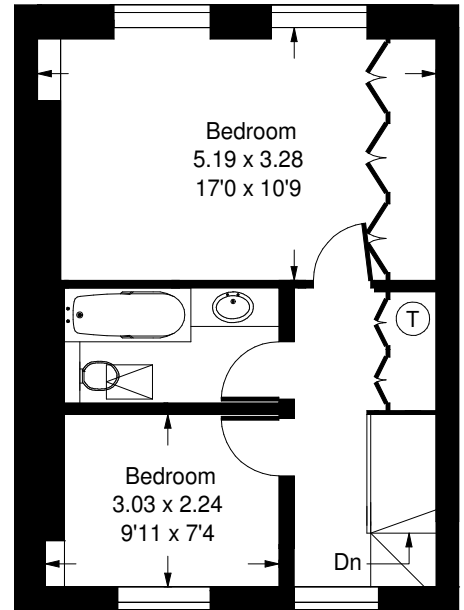
Approx. Gross Internal Area
 165 sq m / 1776 sq ft
 Vault = 7.4 sq m / 80 sq ft
 Total = 172.4 sq m / 1856 sq ft



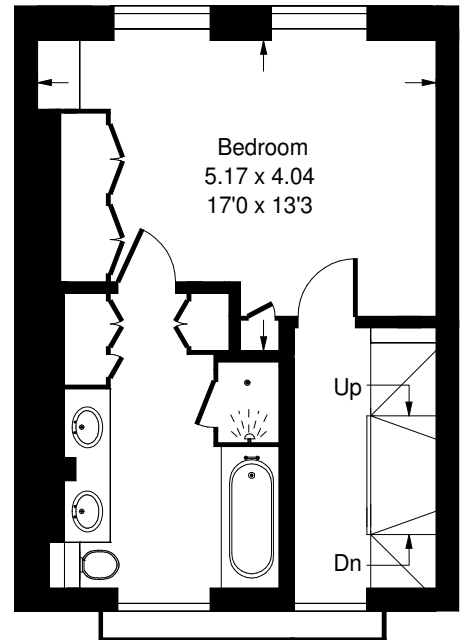
Lower Ground Floor



Ground Floor



Second Floor



First Floor

--- = Reduced headroom below 1.5 m / 5'0"

Whilst every attempt has been made to ensure the accuracy of the floor plan, measurements are approximate and not to scale. No guarantee is given on the total square footage of the property quoted on the plan. Figures given are for guidance. Plan is for illustration purposes only, not to be used for valuations.