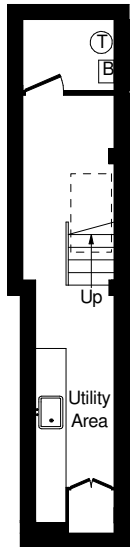


# Hurlingham Road, SW6

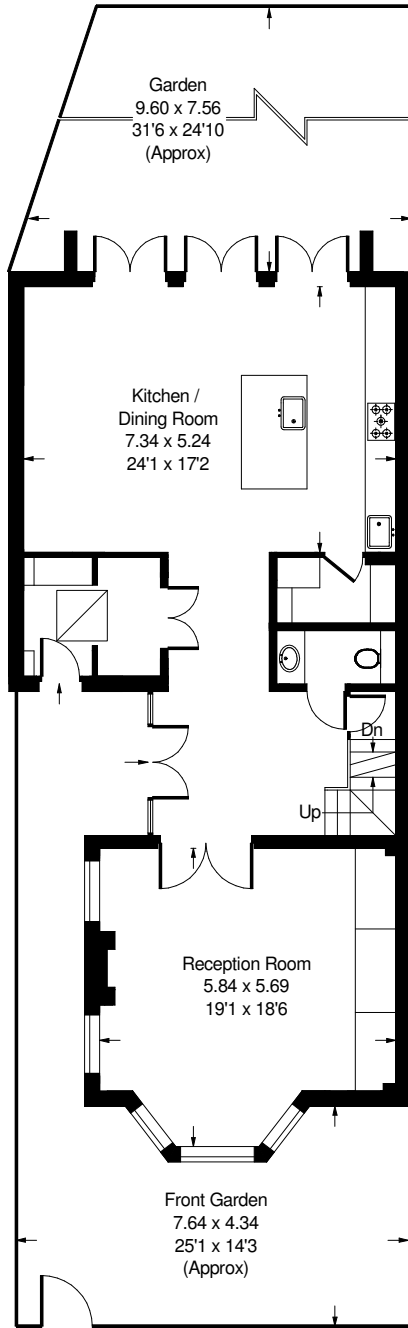
Approx. Gross Internal Area = 323 sq m / 3477 sq ft  
 Eaves Storage = 10 sq m / 107 sq ft  
 Total = 333 sq m / 3584 sq ft



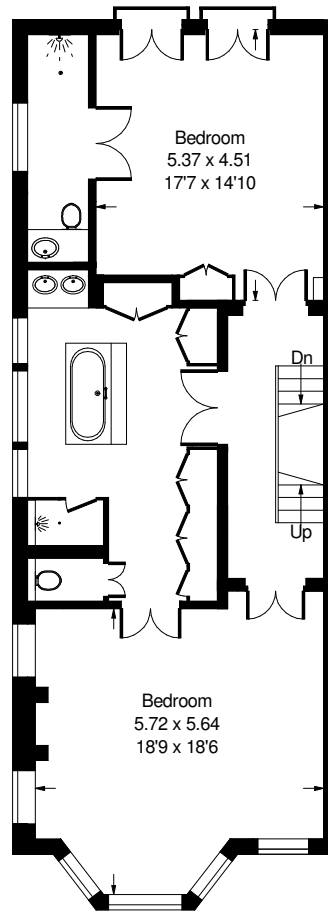
= Reduced headroom below 1.5 m / 5'0"



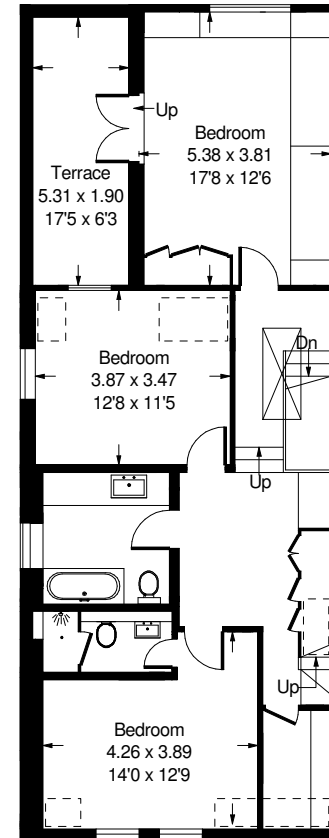
**Lower  
Ground Floor**



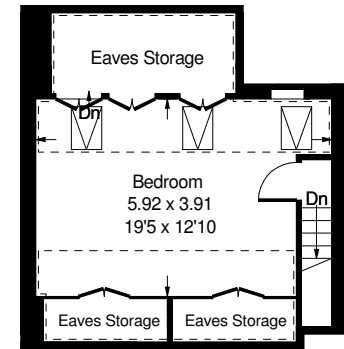
**Ground Floor**



**First Floor**



**Second Floor**



**Third Floor**

Whilst every attempt has been made to ensure the accuracy of the floor plan, measurements are approximate and not to scale.  
 No guarantee is given on the total square footage of the property quoted on the plan. Figures given are for guidance.  
 Plan is for illustration purposes only, not to be used for valuations.