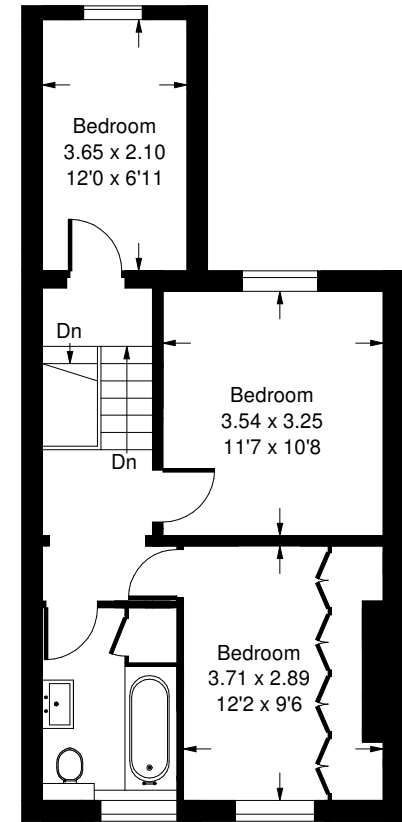
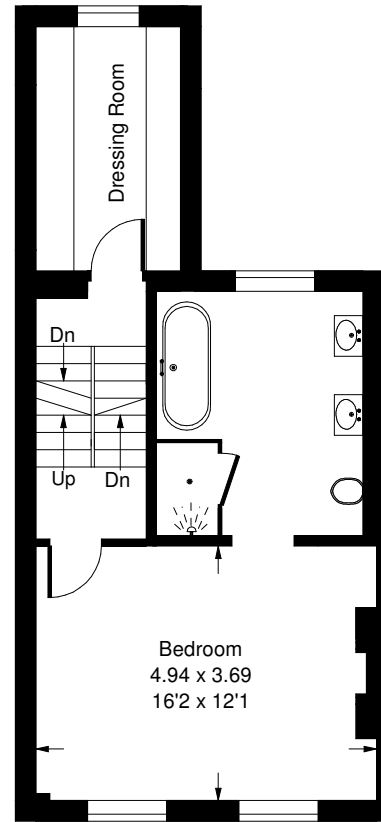
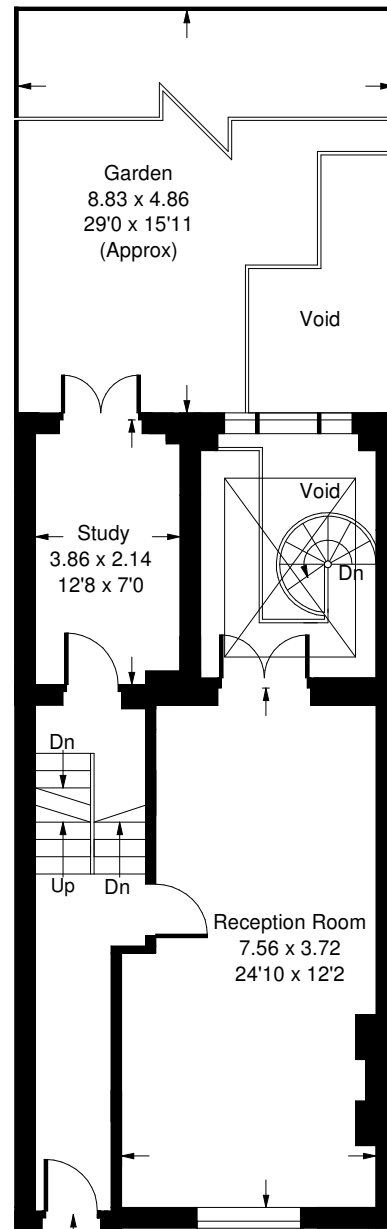
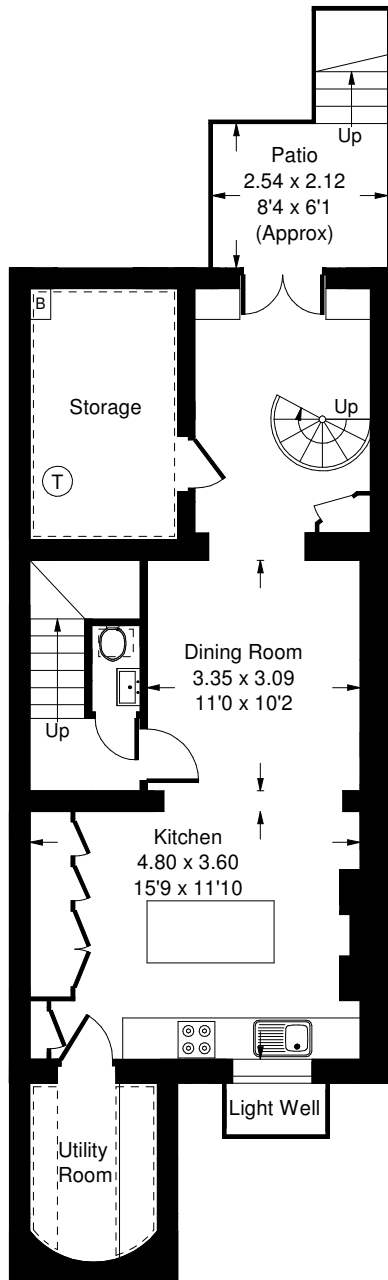
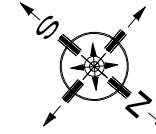


# Seymour Walk, SW3

Approx. Gross Internal Area  
201.4 sq m / 2168 sq ft  
(Excluding Void)



= Reduced headroom below 1.5 m / 5'0"

**Lower Ground Floor**

**Ground Floor**

**First Floor**

**Second Floor**

Whilst every attempt has been made to ensure the accuracy of the floor plan, measurements are approximate and not to scale. No guarantee is given on the total square footage of the property quoted on the plan. Figures given are for guidance. Plan is for illustration purposes only, not to be used for valuations.